

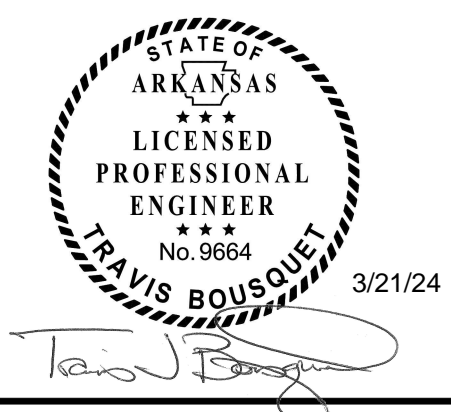


ENERGY TRANSFER

ARDOT I-49 ROADWAY EXPANSION PROJECT

I-49 PIPELINE RELOCATION - ETC LINE 0548

SEBASTIAN COUNTY, ARKANSAS



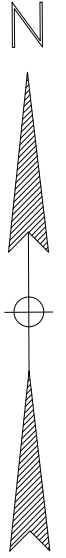
**ISSUED FOR
CONSTRUCTION**
03/21/24



RELOCATION FOR ARDOT I-49 PROJECT
ETC CROSSING No. 0548
COVER SHEET
SEBASTIAN COUNTY, ARKANSAS

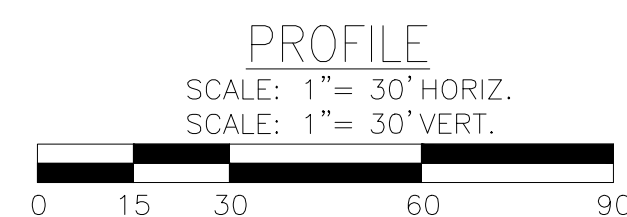
PROJECT NO.	C-23034-GL-21300656
PREVIOUS DWG. NO.	
SHEET - OF -	
DWG. NO.	0548_C100001
SHEET 1 OF 4	0

SECTION 37-T8N-R31W



THE PIPELINE INFORMATION SHOWN ON THIS DRAWING IS A COMPILATION OF DATA OBTAINED FROM DRAWINGS AND SURVEY DATA FROM VARIOUS SOURCES. ETC DOES NOT GUARANTEE THE ACCURACY OR COMPLETENESS OF THE INFORMATION SHOWN. IT IS THE CONTRACTOR'S RESPONSIBILITY TO LOCATE AND/OR CONFIRM THE LOCATIONS OF ALL UTILITIES AND PIPELINES PRIOR TO EXCAVATION.

EXISTING PIPE TO BE PIGGED,
CLEAN AND REMOVED



STATE OF
ARKANSAS

LICENSED
PROFESSIONAL
ENGINEER

No. 9664
TRAVIS BOUSQUET
3/21/24

**ISSUED FOR
CONSTRUCTION**
03/21/24

[illegible]



ENERGY TRANSFER

ARDOT I-49 ROADWAY EXPANSION PROJECT

I-49 PIPELINE RELOCATION - ETC LINE BT-14

SEBASTIAN COUNTY, ARKANSAS



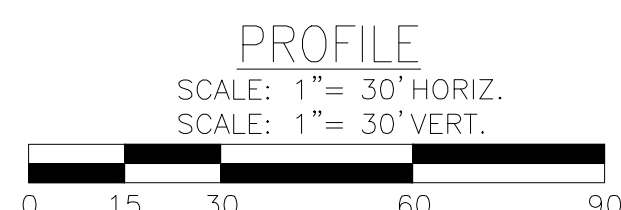
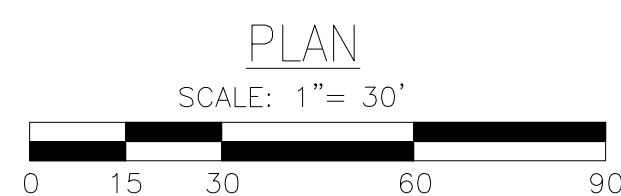
**ISSUED FOR
CONSTRUCTION**
03/21/24



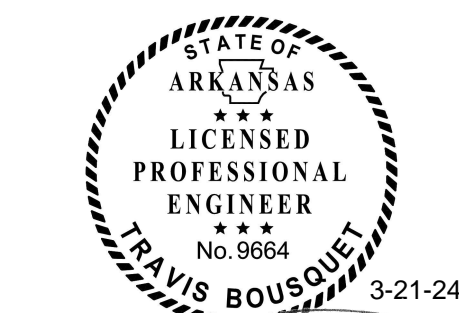
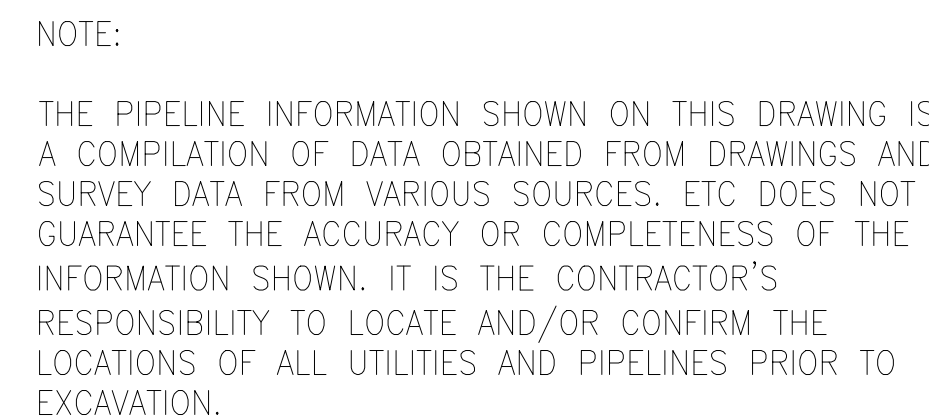
RELOCATION FOR ARDOT I-49 PROJECT
ETC CROSSING No. BT-14
COVER SHEET
SEBASTIAN COUNTY, ARKANSAS

PROJECT NO.	G-23113-GL-26520113
PREVIOUS DWG. NO.	
SHEET - OF -	
DWG. NO.	BT-14_C100001
SHEET 1 OF 5	0

SECTION 37-T8N-R31W





NO GUARANTEE IS GIVEN OR IMPLIED BY ATWELL LLC. AS TO THE EXACT LOCATION OF EXISTING PIPELINES, UNDERGROUND UTILITIES, DRAINAGE, OR ROADWAY DESIGN. ALSO, THERE IS NO GUARANTEE GIVEN OR IMPLIED THAT ALL EXISTING PIPELINES OR UNDERGROUND UTILITIES HAVE BEEN LOCATED AND DEPICTED ON THESE DRAWINGS. THE PROFESSIONAL ENGINEERING STAMP ONLY APPLIES TO THE PROPOSED PIPELINE DESIGN. ALL OTHER EXISTING AND PROPOSED WORK SUCH AS ROADWAY, DRAINAGE, FOREIGN UTILITIES, ETC. ARE SHOWN AS REFERENCE ONLY AND TO BE THE RESPONSIBILITY OF OTHERS.



**ISSUED FOR
CONSTRUCTION**
03/21/24

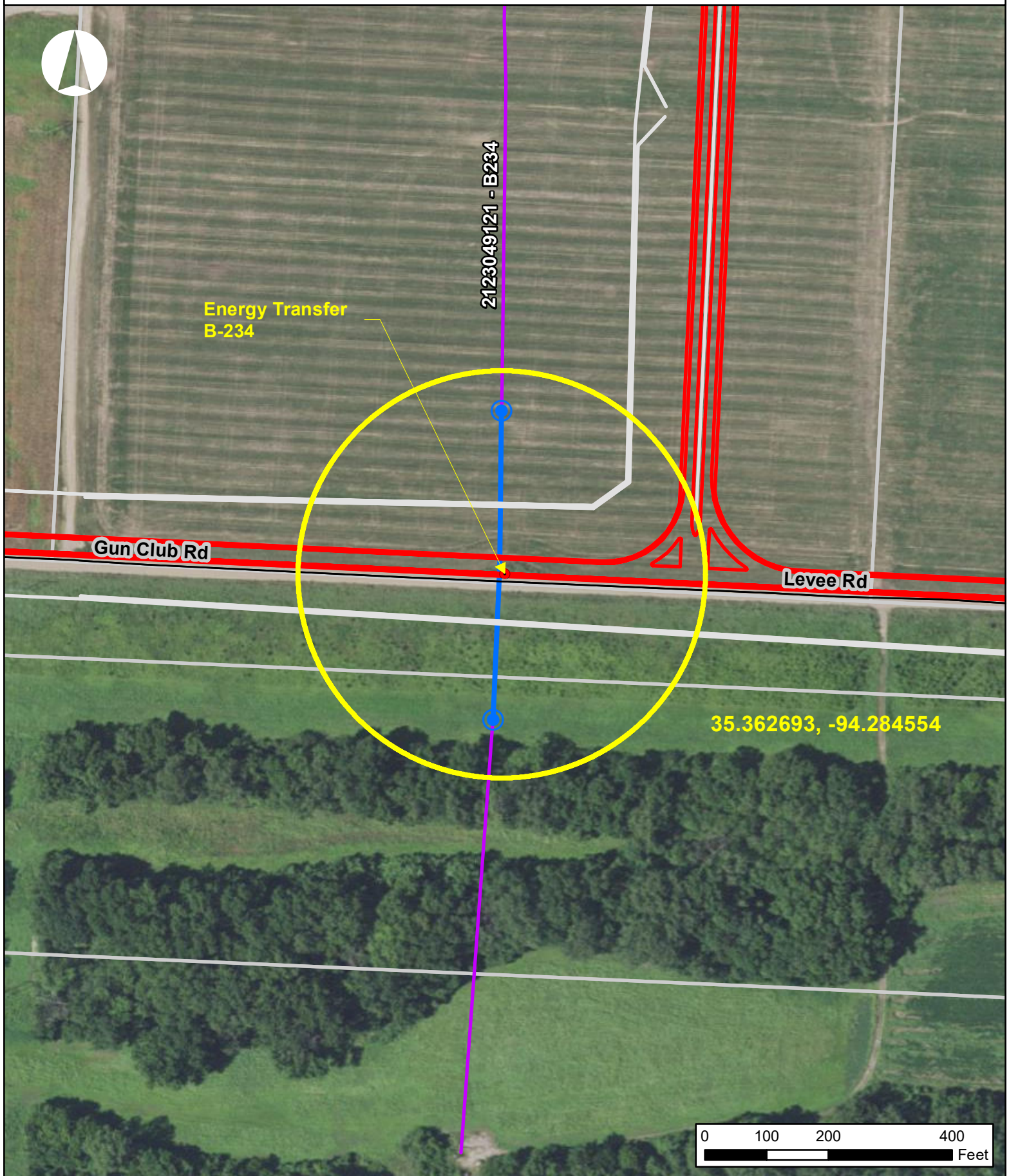
[illegible]



								DWG. STATUS	CHECKED		APPROVED				WBS: LINE NO.	C-23113-GI-26520113 BT-14	 <div>ENERGY TRANSFER</div>	RELOCATION FOR ARDOT HWY I-49 PROJECT ETC CROSSING No. BT-14 BYPASS DETAILS SEBASTIAN COUNTY, ARKANSAS	PROJECT NO.	G-23113-GI-26520113	
								BY	DATE	BY	DATE	BY	DATE	CONSTRUCTION YEAR 2024		PREVIOUS DWG. NO.					
							PREL'Y	-	-	-	-			DESIGN	BY	DATE			SHEET 4 OF 5		
							BID	-	-	-	-			DRAWN	WC	03/20/24			DWG. NO.		
							CONSTR.	-	-	-	-			ASBUILT					BT-14_C100005		
							CADDS	PLOT DATE: 03/20/24				FILE NAME: BT-14_C100005				SCALE:					
DWG. NO.	REFERENCE DRAWING TITLE						NO.	REVISION - DESCRIPTION						BY	DATE	CHK'D			APP'D		
			O	ISSUED FOR CONSTRUCTION			WLC	03/21/24	MF	JF											

ARDOT Project 040902 B-234

10/6/2023



— Proposed Highway Design — ARDOT Right of Way — Proposed Relocation — Existing Pipelines